

Wash Cockle Fishery 2024 – Interim Management Measures Exemption conditions

Fishers operating under an exemption issued under Byelaw 8 (Temporary Closure of Shellfish Fisheries) are required to undertake their fishing activities in accordance with the conditions set by the Authority.

In accordance with the Interim Management Measures for the Wash bivalve fisheries, the following Exemption Conditions are applicable to fishers operating in the Wash Cockle Fishery 2024 from the date specified in Exemption Condition 3 (Opening / closing date).

Exemption Condition 1: Wash Fishery Order Regulations

It is prohibited to fish other than in strict accordance with the Wash Fishery Order 1992 Regulations 3 to 17 in Schedule 1 as they existed prior to expiry of the Order.

For the purpose of these conditions, the Regulations at Schedule 1 should be read as follows:

- a) Reference to ‘Regulated Fishery’ or ‘Several Fishery’ should be read as fisheries managed under the interim measures; and
- b) Reference to ‘licences’ should be read as exemptions issued by the Authority to the Temporary Closure in The Wash.
- c) References to ‘licence conditions’ should be read as conditions attaching to exemptions issued by the Authority to the temporary Closure in The Wash.
- d) “prescribed species” means any of the species specified in the Wash Fishery Order 1992 as prescribed species.
- e) “cockle” means any bivalve mollusc belonging to the genus *Cerastoderma*;
- f) “prop-washing” means the practice of turning a vessel in tight circles to aid the fishing of cockles;

Exemption Condition 2: Fishing Method

It is prohibited to fish for, take or remove from the fishery cockles using any method other than hand-working which can be augmented by prop-washing so far as it is permitted by Wash Fishery Order Regulation 17.

Enclosure 1: Exemption Conditions

Exemption Condition 3: Opening / closing date

It is prohibited to fish for, take or remove from the fishery cockles prior to the open date or after the close date of the fishery.

1. The fishery will open at 0400hrs on 20 June 2024 (the open date) and in accordance with the Days of Operation (Exemption Condition 6) thereafter.
2. The Authority will notify Exemption Holders, Nominated Representatives and Deputies with at least 12 hours' notice of the close date to:
 - a. meet the conservation objectives of the marine protected areas of The Wash or for the sustainability or the viability of the fishery; or
 - b. prevent the Total Allowable Catch from being exceeded; or
 - c. enable a cockle survey.

Exemption Condition 4: Closed areas

1. It is prohibited to fish for, take or remove from the fishery any cockles from areas marked as closed in the charts at Schedule 2 of these Exemption Conditions.
2. It is prohibited to fish for, take or remove from the fishery any cockles from areas in the charts at Schedule 3 (Shellfish Lays) of these Exemption Conditions.

Exemption Condition 5: Daily Catch Restriction (cockles)

The maximum weight of cockles as referred to in Wash Fishery Order Regulation 8 (Daily Catch Restrictions – Cockles) is 2000kg. For the purpose of determining the weight of catch, no allowance will be given for the weight of containers or sand or other material.

Exemption Condition 6: Days of Operation

It is prohibited to fish for, take or remove from the fishery cockles other than during publicised Days of Operation at Schedule 4.

Exemption Condition 7: Measures for the protection of small cockles

1. It is prohibited to fish for, take or remove from the fishery any cockles unless such have been sorted using an implement which is capable of rejecting the majority of cockles which are under 10mm (width) and / or are of the 2023-year class of cockles.
2. Cockles of less than 10mm should be left on the cockle beds and not landed. Where cockles of less than 10mm are landed excessively, the Authority will consider closing the fishery or parts thereof.

Failure to comply with an exemption condition is an offence under section 163(1) of the Marine and Coastal Access Act 2009. The master, owner and charterer (if any) of a vessel used in the commission of an offence shall each be guilty of any such offence and liable to an unlimited fine on summary conviction in accordance with section 163(2) and (3).

Enclosure 1: Exemption Conditions

Exemption conditions are subject to change and fishers will be notified of any amendments to the exemption conditions.

Schedule 1 - Wash Fishery Order 1992 Regulations



Eastern Inshore Fisheries and Conservation Authority

Wash Fishery Order 1992

Wash Fishery Order 1992 Regulations

The Authority for the Eastern Inshore Fisheries and Conservation District in exercise of its powers under Article 7 of the Wash Fishery Order 1992 under the Sea Fisheries (Shellfish) Act 1967, as amended, has made the following regulations;

1. Interpretation

In these Regulations:

- 1) "the Order" means the Wash Fishery Order 1992 (SI 1992/3038);
- 2) "Regulated Fishery" means a fishery as described by Eastern IFCA in accordance with Article 8(5) of the Order and undertaken under the authority of a licence issued under Article 8(1) of the Order;
- 3) "Several Fishery" means fishing under the authority of a lease granted under Article 6(1) of the Order;
- 4) "prescribed species" means any of the species specified in the Wash Fishery Order 1992 as prescribed species.
- 5) "cockle" means any bivalve mollusc belonging to the genus *Cerastoderma*;
- 6) "mussel" means any of the species belonging to the genus *Mytilus*;
- 7) "harvestable mussel fishery" means a mussel fishery, the licence conditions for which, allow for mussels fished for, taken or removed from the fishery to be sold directly to a market;

Enclosure 1: Exemption Conditions

8) “relaying mussel fishery” means a mussel fishery, the licence conditions for which do not allow mussels to be sold directly to market but instead, must be relayed for the purpose of aquaculture;

9) “licence” means a licence granted under Article 8(1) of Order;

10) “bottom-towed-gear” means any fishing gear designed to be towed, dragged or pushed through the water whilst in contact with the seabed;

11) “prop-washing” means the practice of turning a vessel in tight circles to aid the fishing of cockles;

2. Application

The following Regulations apply to persons fishing under the authority of a licence.

3. Bottom-towed-gear restrictions

1) A person must not fish for, take or remove from the fishery any of the prescribed species using bottom-towed-gear unless a written certificate of approval for that bottom-towed-gear has been provided by the Authority in accordance with Regulation 4.

2) A person must not fish for, take or remove from the fishery, cockles using;

- a) more than one instrument of bottom-towed-gear; or
- b) a hydraulic suction dredge with an aggregate dredge head width of more than 76cm.

3) Without written authorisation from the Authority, a person must not fish for, take or remove from the fishery, mussels using a mussel dredge with an inside opening of more than one meter in width.

4) A person must not fish for, take or remove from the fishery any of the prescribed species other than cockles using more than two instruments of bottom-towed-gear.

4. Bottom-towed-gear - Approval

1) A provisional certificate of approval may be issued which will be valid for one month.

2) A full certificate of approval may be issued, which will be valid until 31 December following the date the certification is issued, where bottom-towed-gear meets the following conditions:

Enclosure 1: Exemption Conditions

- a) The bottom-towed-gear does not result in more than 10% by weight of the target species being visibly damaged;
- b) The Authority has been advised by scientists who appear to them to be suitably qualified that the bottom-towed-gear does not cause unacceptable damage to habitats or species;
- c) Bottom-towed-gear and associated catch sorting equipment is of a specification required by the Authority for reasons relating to fisheries management or are pursuant of meeting 4(2)(a) and 4(2)(b) above.

3) For the purpose of this regulation, an organism is considered visibly damaged when on examination it is seen that there are visible cracks, chips or there is other damage to the shell. The damage rate will be determined using representative samples of shellfish retained and rejected by the operation of the bottom-towed-gear.

5. Vessel restrictions

- 1) A person must not use a vessel exceeding 14 meters in overall length to fish for, take or remove from the fishery any of the prescribed species unless authorised by the Authority in accordance with sub-paragraph 2.
- 2) The Authority may exempt vessels from sub-paragraph 1 where evidence is provided that the owner or skipper of the vessel has used the vessel to fish for, take or remove from the fishery any of the prescribed species from within the Regulated Fishery prior to the date of the advertisement of the Order.
- 3) Exemption in accordance with sub-paragraph 2 shall cease if the vessel changes ownership.

6. Tenders

A vessel must not carry or tow a tender which is greater than six metres in overall length.

7. Sorting of catch

Any material rejected through the sorting of catch of any of the prescribed species must be returned immediately to the sea or seabed, as nearly as possible to the place from which it was taken and spread thinly and evenly over that area.

8. Daily catch restrictions (cockles)

- 1) A person must not, in any one calendar day, fish for, take (save for doing so with the intention of riddling or otherwise sorting catch in

Enclosure 1: Exemption Conditions

accordance with regulation 7) or remove from the fishery more than the maximum weight of cockles specified in the licence conditions by hand.

2) A person must not, in any one calendar day, fish for or take (save for doing so with the intention of riddling or otherwise sorting catch in accordance with regulation 7) or remove from the fishery more than 4000 kilograms of cockles by dredge.

3) For the purpose of determining the weight of catch no allowance will be given for the weight of any containers or sand or other material.

4) A person must not fish for, take or remove from the fishery any cockles by hand if, during the same calendar day, that person has fished for, taken or removed any cockles by dredge.

5) A person must not fish for, take or remove from the fishery any cockles by dredge if, during the same calendar day, that person has fished for, taken or removed any cockles by hand.

9. Daily catch restrictions (mussels)

1) A person must not, in any one calendar day, fish for or take (save for doing so with the intention of riddling or otherwise sorting catch in accordance with regulation 7) or remove from the fishery:

a) More than 4000 kilograms of mussels during a harvestable mussel fishery; or

b) More than 8000 kilograms of mussels during a relaying mussel fishery.

2) For the purpose of determining the weight of catch no allowance will be given for the weight of any containers or sand or other material.

3) A person must not fish for, take or remove from the fishery any mussels from a harvestable mussel fishery if, during the same calendar day, that person has fished for, taken or removed from the fishery mussels from a relaying mussel fishery.

4) A person must not fish for, take or remove from the fishery any mussels from a relaying mussel fishery if, during the same calendar day, that person has fished for, taken or removed from the fishery mussels from a harvestable mussel fishery.

10. Mussels (*Mytilus edulis*) minimum size

1) A person must not remove from the boundary of the Wash Fishery Order 1992 any mussels (*Mytilus edulis*) from within the Regulated Fishery which are less than 45mm in length but must return such immediately to the sea in accordance with sub-paragraph 2 (below)

Enclosure 1: Exemption Conditions

unless they are being fished for, taken or removed as part of a relaying mussel fishery.

2) Mussels and any material arising from the sorting of mussels must be returned immediately to the sea or seabed, as nearly as possible to the place from which it was taken and spread thinly and evenly over that area.

11. Seed movement

Without prejudice to the Article 12 of the Wash Fishery Order 1992, a person must not transport any shellfish under an authorisation granted by said article by road unless an application for such is completed which will require the following information:

- a) Destination of the shellfish; and
- b) The date of the proposed transport.

12. Weekly catch returns

An accurately completed weekly catch return form, supplied by Eastern IFCA, must be returned for each week of fishing, to Eastern IFCA offices by no later than Friday of the calendar week following any fishing activity.

13. Transshipping prohibition

A person must not tranship or otherwise relocate any of the prescribed species, or containers of any description containing any of the prescribed species, fished from the Regulated Fishery from one vessel to another.

14. Requirement to land (cockles)

- 1) A person fishing for cockles must:
 - a) take any cockles fished for from the Regulated fishery straight to port;
 - b) land such cockles immediately; and
 - c) not leave cockles on the sand or deposited in the water in bags or any other container for later collection.
- 2) A person must not land cockles fished for from the Regulated fishery on more than one occasion during one calendar day.

15. Dual fishing prohibition

- 1) A person must not fish for, take or remove from the fishery any of the prescribed species from the Regulated Fishery on the same

Enclosure 1: Exemption Conditions

calendar day as fishing for, taking or removing from the fishery the same prescribed species from outside of the Regulated Fishery or from a Several Fishery.

2) A person must not have on board any bottom-towed-gear which could be used to fish for, take or remove from the fishery any of the prescribed species when fishing for, taking or removing from the fishery any of the prescribed species from a hand-work fishery.

16. Standard bags

A person must not land mussels or cockles fished from the Regulated Fishery unless such are contained in a bag which must:

1) be of the following dimensions:

- a) 120 centimetres or 60 centimetres in height;
- b) 97 centimetres in depth;
- c) 97 centimetres in width: and

2) have the words 'Wash Fishery Order' written on at least two sides with lettering which is at least 10 centimetres tall.

17. Prop-washing

1) A person fishing for cockles must not:

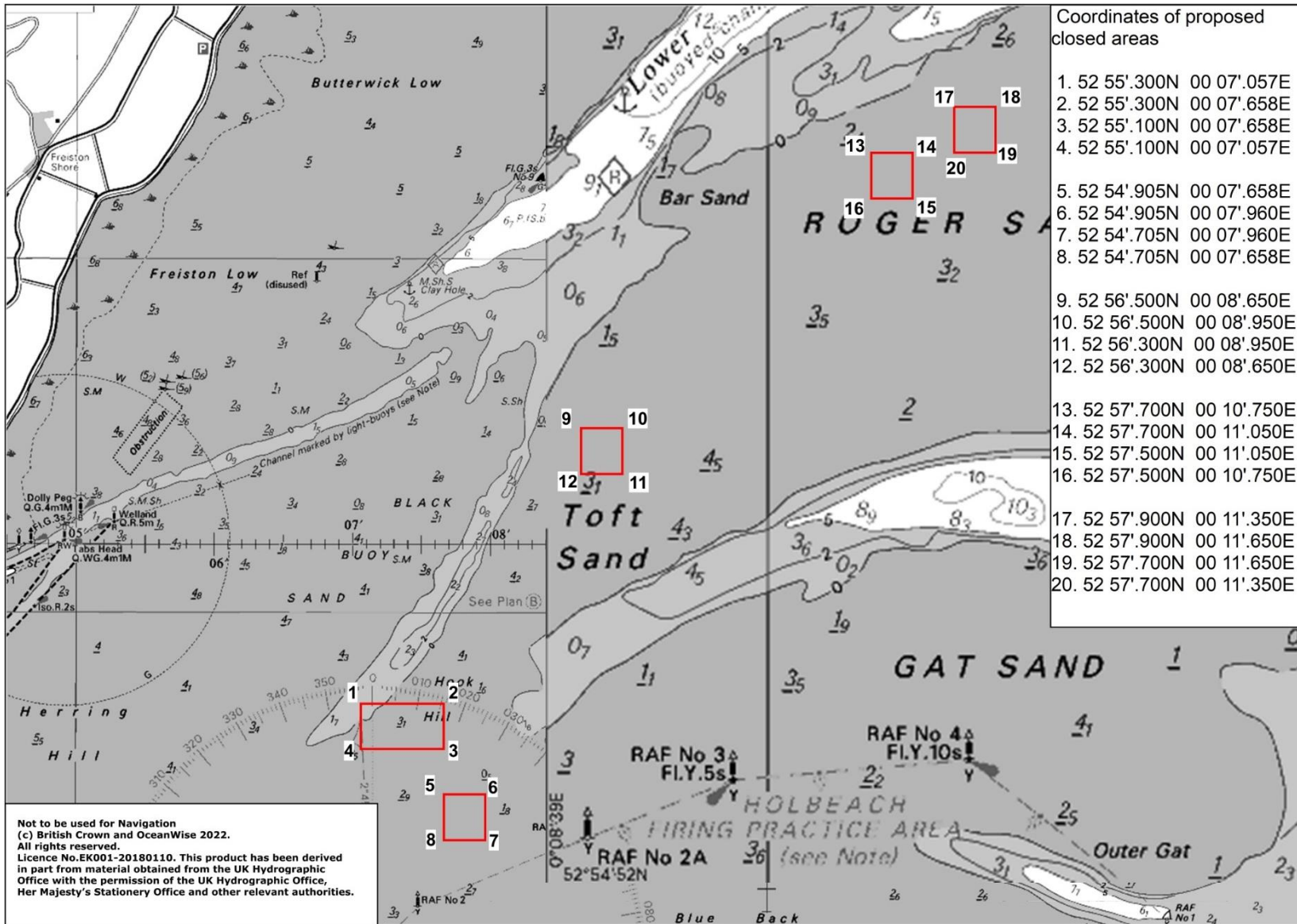
- a) use an anchor which affixes the vessel to the bottom of the seabed during the practice of prop-washing;
- b) conduct prop-washing in such a manner as to cause more than one ring to be formed in the seabed;

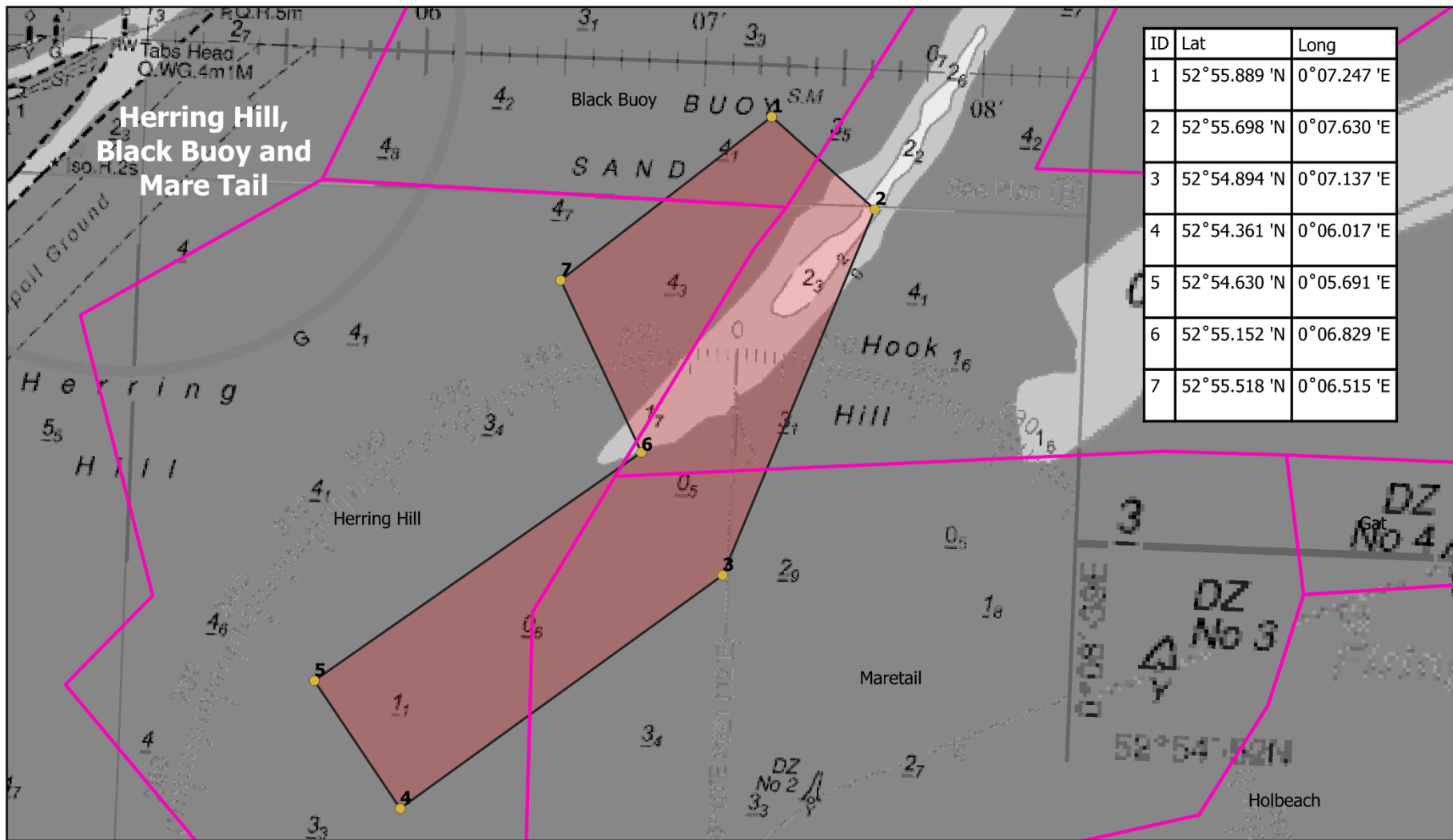
2) A person must spread any cockles dislodged from prop-washing thinly and evenly over the ground, as nearly as possible to the area from which they were dislodged before leaving the bed.

18. Revocations

The Wash Fishery Order 1992 Regulations in force immediately before the date on which these Regulations come into force, are hereby revoked.

Schedule 2: Exemption Condition 4 (1) – Closed Areas





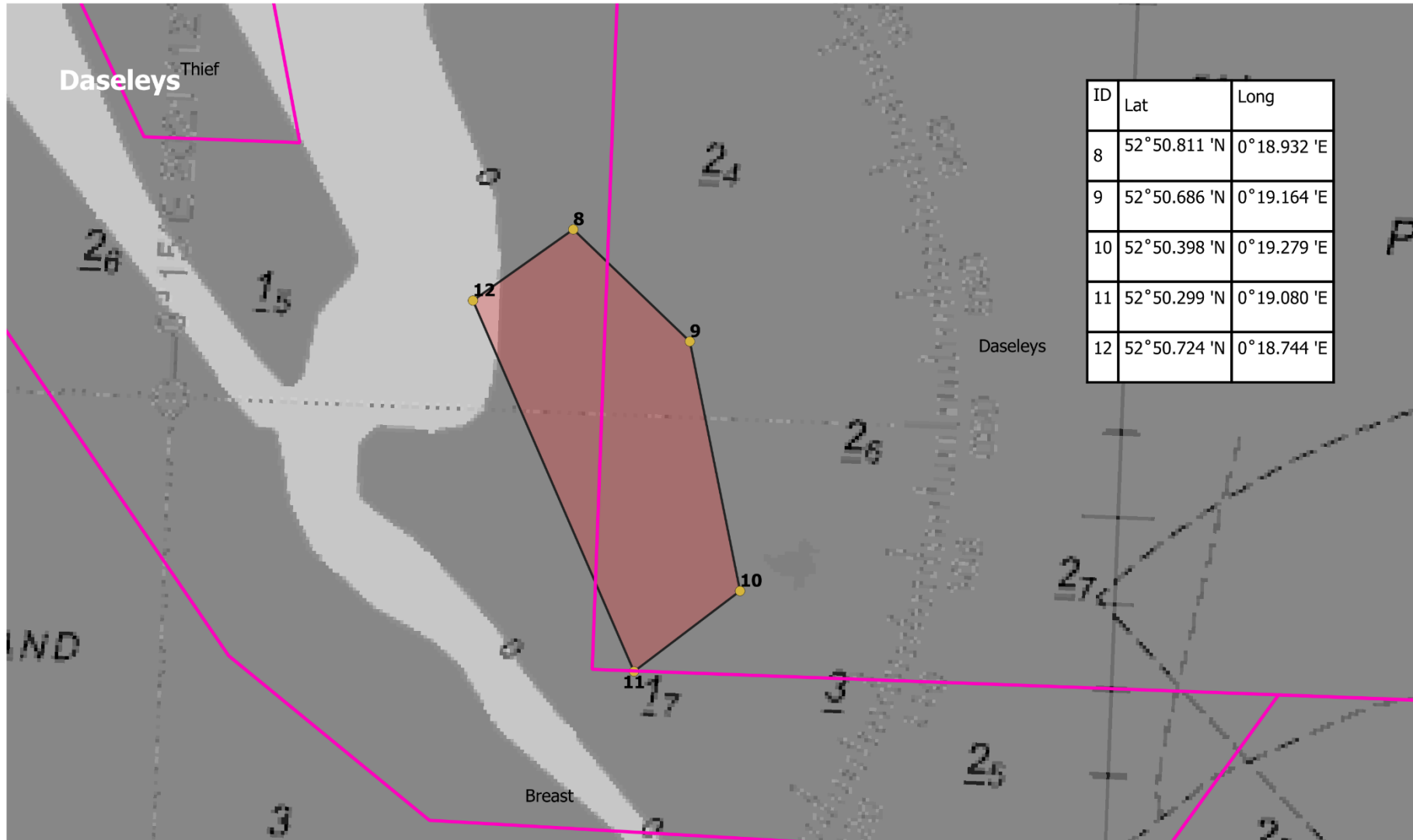
**Not to be used for
Navigation**

**Date: 10/06/2024, Drawn by: EDC,
Projection: WGS 84, Data: EIFCA, SMRU**

 2024 Seal closures

(c) British Crown and OceanWise 2023. All rights reserved. Licence No.EK001-20180110.
This product has been derived in part from material obtained from the UK Hydrographic Office with the permission of the UK Hydrographic Office, Her Majesty's Stationery Office and other relevant authorities.






ID	Lat	Long
8	52°50.811 'N	0°18.932 'E
9	52°50.686 'N	0°19.164 'E
10	52°50.398 'N	0°19.279 'E
11	52°50.299 'N	0°19.080 'E
12	52°50.724 'N	0°18.744 'E

**Not to be used for
Navigation**

**Date: 10/06/2024, Drawn by: EDC,
Projection: WGS 84, Data: EIFCA, SMRU**

 2024 Seal closures

(c) British Crown and OceanWise 2023. All rights reserved. Licence No.EK001-20180110.

This product has been derived in part from material obtained from the UK Hydrographic Office with the permission of the UK Hydrographic Office, Her Majesty's Stationery Office and other relevant authorities.



Schedule 3: Exemption Condition 4(2) – Shellfish Lays

This schedule sets out the areas closed to the fishery under Exemption Condition 4(2).

Closed areas are defined by a boundary drawn by the series of straight lines connecting each point listed in the tables to the next point in sequence and finally returning to the first point in each table as set out in the charts for illustrative purposes.

Pandora

P6	52° 51.860'N	0° 21.573'E
	52° 51.808'N	0° 21.651'E
	52° 51.724'N	0° 21.557'E
	52° 51.576'N	0° 21.481'E
	52° 51.600'N	0° 21.385'E
	52° 51.726'N	0° 21.473'E
P7	52° 51.476'N	0° 21.377'E
	52° 51.471'N	0° 21.460'E
	52° 51.576'N	0° 21.481'E
	52° 51.600'N	0° 21.385'E

Wrangle

W1	53° 00.264'N	0° 12.100'E
	53° 00.262'N	0° 12.266'E
	52° 59.989'N	0° 12.097'E
	52° 59.979'N	0° 12.194'E
W2	53° 00.262'N	0° 12.266'E
	53° 00.263'N	0° 12.427'E
	53° 00.067'N	0° 12.373'E
	52° 59.971'N	0° 12.268'E
	52° 59.979'N	0° 12.194'E

Toft

TOA	52° 57.487'N	0° 10.412'E
	52° 57.600'N	0° 10.269'E
	52° 57.423'N	0° 10.320'E
	52° 57.566'N	0° 10.135'E
TOB	52° 57.600'N	0° 10.269'E
	52° 57.667'N	0° 10.386'E
	52° 57.560'N	0° 10.319'E
	52° 57.612'N	0° 10.422'E
TO1	52° 57.423'N	0° 10.320'E
	52° 57.566'N	0° 10.135'E
	52° 57.352'N	0° 10.126'E
	52° 57.518'N	0° 09.940'E
TO2	52° 57.352'N	0° 10.126'E
	52° 57.518'N	0° 09.940'E
	52° 57.469'N	0° 09.741'E
	52° 57.282'N	0° 09.938'E
TO3a	52° 57.324'N	0° 09.578'E
	52° 57.399'N	0° 09.808'E
	52° 57.187'N	0° 09.716'E
	52° 57.282'N	0° 09.938'E
TO3b	52° 57.324'N	0° 09.578'E
	52° 57.409'N	0° 09.490'E
	52° 57.469'N	0° 09.741'E
	52° 57.399'N	0° 09.808'E
TO4a	52° 57.110'N	0° 09.558'E
	52° 57.244'N	0° 09.400'E
	52° 57.324'N	0° 09.578'E
	52° 57.187'N	0° 09.716'E
TO4b	52° 57.244'N	0° 09.400'E
	52° 57.289'N	0° 09.470'E
	52° 57.377'N	0° 09.378'E
	52° 57.349'N	0° 09.278'E
TO4c	52° 57.324'N	0° 09.578'E
	52° 57.289'N	0° 09.470'E
	52° 57.377'N	0° 09.378'E
	52° 57.409'N	0° 09.490'E

TO5	52° 57.030'N	0° 09.327'E
	52° 57.154'N	0° 09.214'E
	52° 57.110'N	0° 09.558'E
	52° 57.244'N	0° 09.400'E
TO6	52° 56.950'N	0° 09.221'E
	52° 57.086'N	0° 09.086'E
	52° 57.030'N	0° 09.372'E
	52° 57.154'N	0° 09.214'E
TO7	52° 56.950'N	0° 09.221'E
	52° 57.086'N	0° 09.086'E
	52° 56.882'N	0° 09.083'E
	52° 57.021'N	0° 08.940'E
TO8	52° 56.810'N	0° 08.951'E
	52° 56.949'N	0° 08.809'E
	52° 56.882'N	0° 09.083'E
	52° 57.021'N	0° 08.940'E
TO9	52° 56.810'N	0° 08.951'E
	52° 56.949'N	0° 08.809'E
	52° 56.663'N	0° 08.810'E
	52° 56.757'N	0° 08.657'E
TO10	52° 56.567'N	0° 08.529'E
	52° 56.519'N	0° 08.652'E
	52° 56.663'N	0° 08.810'E
	52° 56.757'N	0° 08.657'E
TO11	52° 56.567'N	0° 08.529'E
	52° 56.519'N	0° 08.652'E
	52° 56.440'N	0° 08.438'E
	52° 56.415'N	0° 08.503'E

Clay Hole

CH1	52° 56.540'N	0° 59.980'E
	52° 56.540'N	0° 61.180'E
	52° 56.630'N	0° 63.300'E
	52° 56.640'N	0° 61.120'E
CH1a	52° 56.630'N	00° 06.300'E
	52° 56.629'N	00° 06.383'E
	52° 56.540'N	00° 06.180'E
	52° 56.540'N	00° 05.980'E
	52° 56.463'N	00° 06.081'E
CH2	52° 56.640'N	00° 06.120'E
	52° 56.630'N	00° 06.300'E
	52° 56.750'N	00° 06.450'E
	52° 56.750'N	00° 06.290'E
CH2a	52° 56.630'N	00° 06.300'E
	52° 56.629'N	00° 06.383'E
	52° 56.540'N	00° 06.180'E
	52° 56.540'N	00° 06.980'E
	52° 56.463'N	00° 06.081'E
CH4	52° 56.850'N	0° 06.580'E
	52° 56.810'N	0° 06.350'E
	52° 56.880'N	0° 06.450'E
	52° 56.900'N	0° 06.680'E
CH6	52° 56.155'N	0° 05.629'E
	52° 56.135'N	0° 05.461'E
	52° 56.077'N	0° 05.462'E
	52° 56.103'N	0° 05.631'E
	52° 56.165'N	0° 05.725'E
	52° 56.210'N	0° 05.724'E
CH7	52° 56.493'N	0° 05.815'E
	52° 56.448'N	0° 05.879'E
	52° 56.454'N	0° 05.660'E
	52° 56.406'N	0° 05.700'E
CH8	52° 56.540'N	0° 05.980'E
	52° 56.463'N	0° 06.081'E
	52° 56.493'N	0° 05.815'E
	52° 56.448'N	0° 05.879'E

Roger

RG1	52° 56.973'N	0° 12.732'E
	52° 57.029'N	0° 12.330'E
	52° 57.414'N	0° 12.914'E
	52° 57.413'N	0° 12.664'E
RG2	52° 57.960'N	0° 11.213'E
	52° 57.877'N	0° 11.310'E
	52° 57.827'N	0° 11.200'E
	52° 57.919'N	0° 11.103'E
RG3	52° 57.884'N	0° 10.873'E
	52° 57.741'N	0° 10.971'E
	52° 57.710'N	0° 10.862'E
	52° 57.790'N	0° 10.689'E
RG4	52° 57.827'N	0° 11.200'E
	52° 57.919'N	0° 11.103'E
	52° 57.884'N	0° 10.873'E
	52° 57.741'N	0° 10.971'E

Black Buoy/Herring Hill

BB1	52° 56.340'N	0° 08.410'E
	52° 56.300'N	0° 08.440'E
	52° 56.260'N	0° 08.310'E
	52° 56.210'N	0° 08.340'E
BB2	52° 56.232'N	0° 08.202'E
	52° 56.190'N	0° 08.310'E
	52° 56.094'N	0° 08.070'E
	52° 56.046'N	0° 08.172'E
BB3	52° 56.094'N	0° 08.070'E
	52° 56.046'N	0° 08.172'E
	52° 55.847'N	0° 08.067'E
	52° 55.886'N	0° 07.932'E
BB4	52° 55.699'N	0° 07.967'E
	52° 55.728'N	0° 07.841'E
	52° 55.847'N	0° 08.067'E
	52° 55.886'N	0° 07.932'E
HH1	52° 54.996'N	0° 06.552'E
	52° 55.088'N	0° 06.627'E
	52° 55.148'N	0° 06.684'E
	52° 54.911'N	0° 06.742'E
	52° 55.078'N	0° 06.855'E

Thief

TH2	52° 51.200'N	0° 17.760'E
	52° 51.580'N	0° 17.480'E
	52° 51.220'N	0° 17.850'E
	52° 51.600'N	0° 17.550'E
TH4	52° 51.712'N	0° 17.788'E
	52° 51.575'N	0° 17.819'E
	52° 51.511'N	0° 17.853'E
	52° 51.435'N	0° 17.886'E
	52° 51.340'N	0° 17.926'E
	52° 51.351'N	0° 17.987'E
	52° 51.717'N	0° 17.846'E
TH5	52° 51.844'N	0° 17.781'E
	52° 51.917'N	0° 17.789'E
	52° 51.724'N	0° 17.838'E
	52° 51.837'N	0° 17.839'E
TH6	52° 51.922'N	0° 17.536'E
	52° 52.045'N	0° 17.208'E
	52° 52.060'N	0° 17.475'E
	52° 51.908'N	0° 17.292'E
TH7	52° 51.897'N	0° 17.784'E
	52° 51.897'N	0° 17.861'E
	52° 51.837'N	0° 17.839'E
	52° 51.845'N	0° 17.781'E
TH8	52° 51.897'N	0° 17.784'E
	52° 51.897'N	0° 17.861'E
	52° 52.162'N	0° 17.861'E
	52° 52.148'N	0° 17.948'E

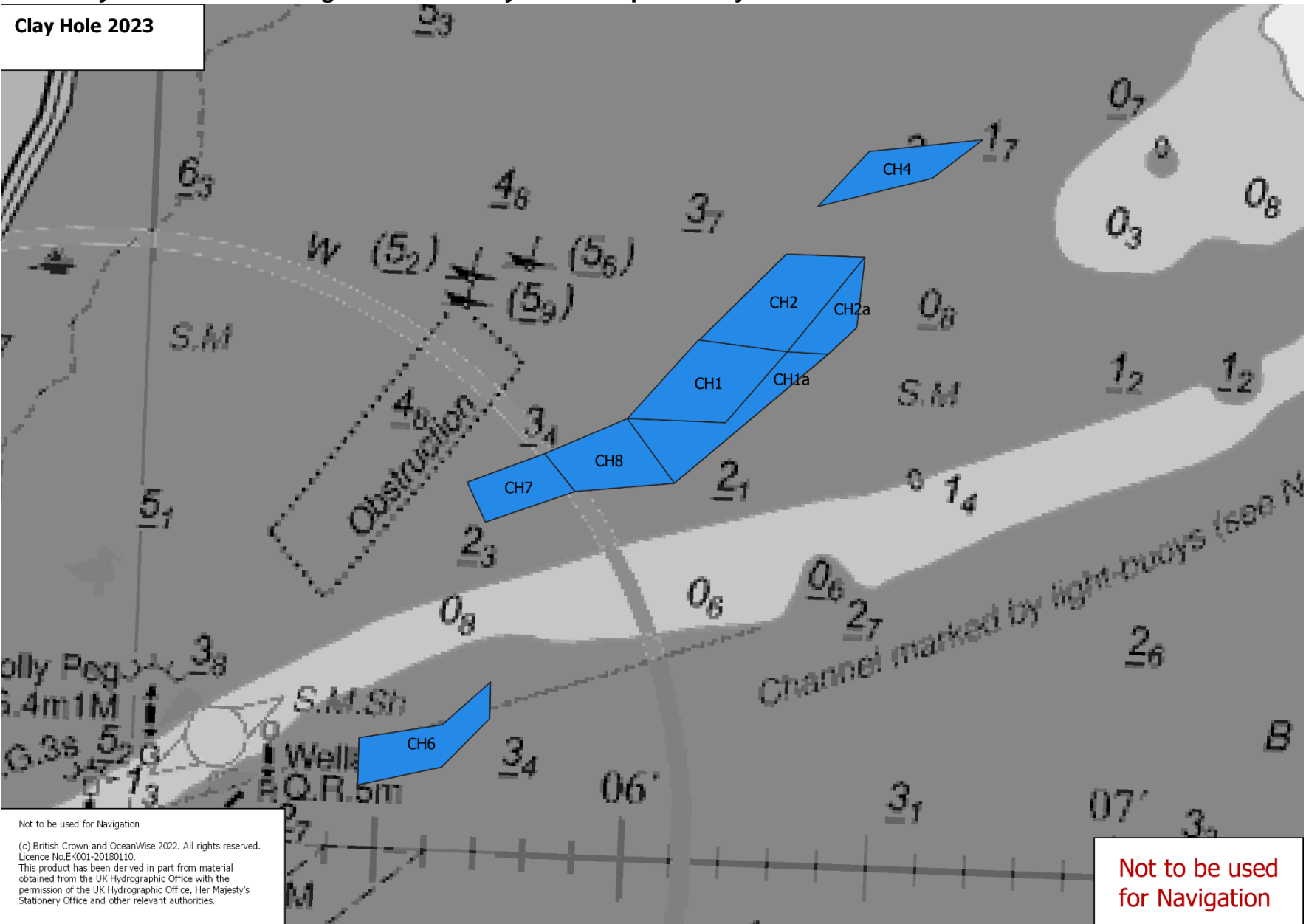
Scotsman's Sled

SS1	52° 50.386'N	0° 17.100'E
	52° 50.240'N	0° 17.298'E
	52° 50.330'N	0° 17.489'E
	52° 50.430'N	0° 17.340'E
SS2	52° 50.652'N	0° 16.523'E
	52° 50.600'N	0° 16.447'E
	52° 50.686'N	0° 16.296'E
	52° 50.770'N	0° 16.362'E
SS4	52° 50.819'N	0° 16.150'E
	52° 50.772'N	0° 16.114'E
	52° 50.728'N	0° 16.236'E
	52° 50.794'N	0° 16.303'E
	52° 50.839'N	0° 16.246'E
SS5	52° 50.658'N	0° 16.527'E
	52° 50.595'N	0° 16.444'E
	52° 50.490'N	0° 16.440'E
	52° 50.486'N	0° 16.540'E
SS7	52° 50.386'N	0° 17.100'E
	52° 50.614'N	0° 17.153'E
	52° 50.518'N	0° 16.988'E
	52° 50.430'N	0° 17.340'E
SS8	52° 50.518'N	0° 16.988'E
	52° 50.614'N	0° 17.153'E
	52° 50.430'N	0° 17.340'E
	52° 50.330'N	0° 17.489'E
	52° 50.364'N	0° 17.558'E
	52° 50.644'N	0° 17.226'E
	52° 50.714'N	0° 17.126'E
	52° 50.595'N	0° 16.884'E

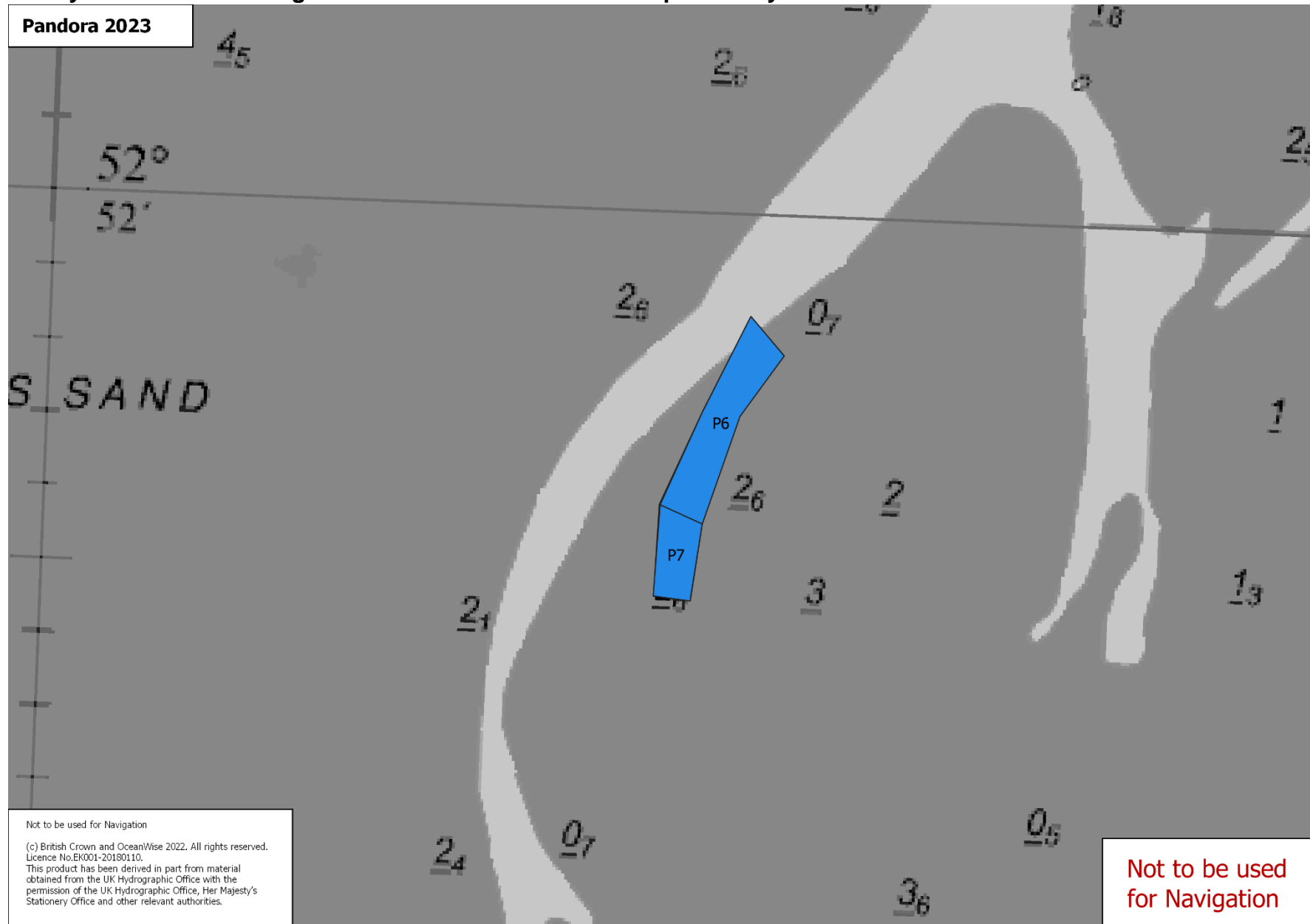
WFO Lays Chart 1 – showing the area of Black Buoy and Herring Hill sands and private lays



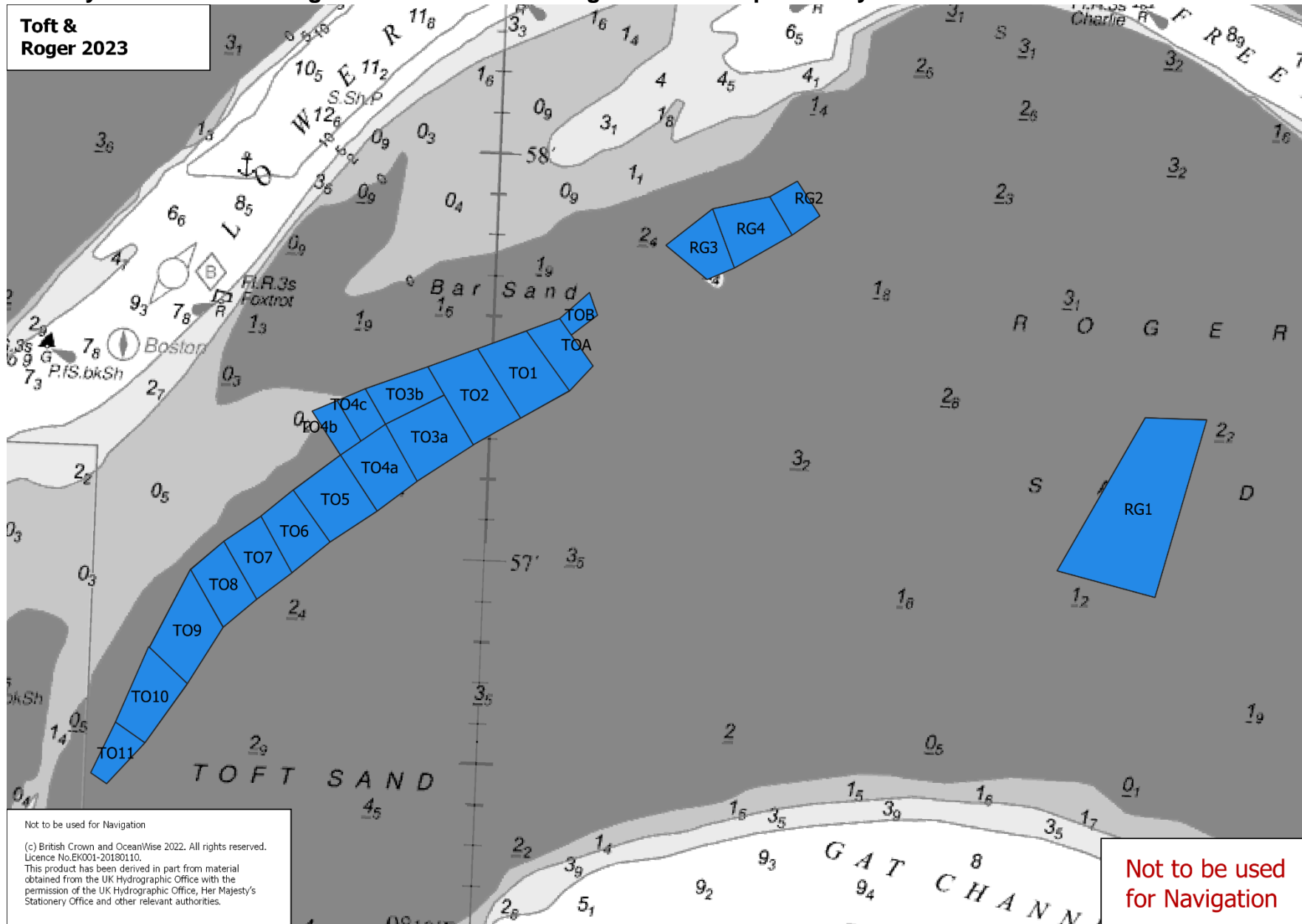
WFO Lays Chart 2 – showing the area of Clay Hole and private lays



WFO Lays Chart 3 – showing the area of Pandora sands and private lays

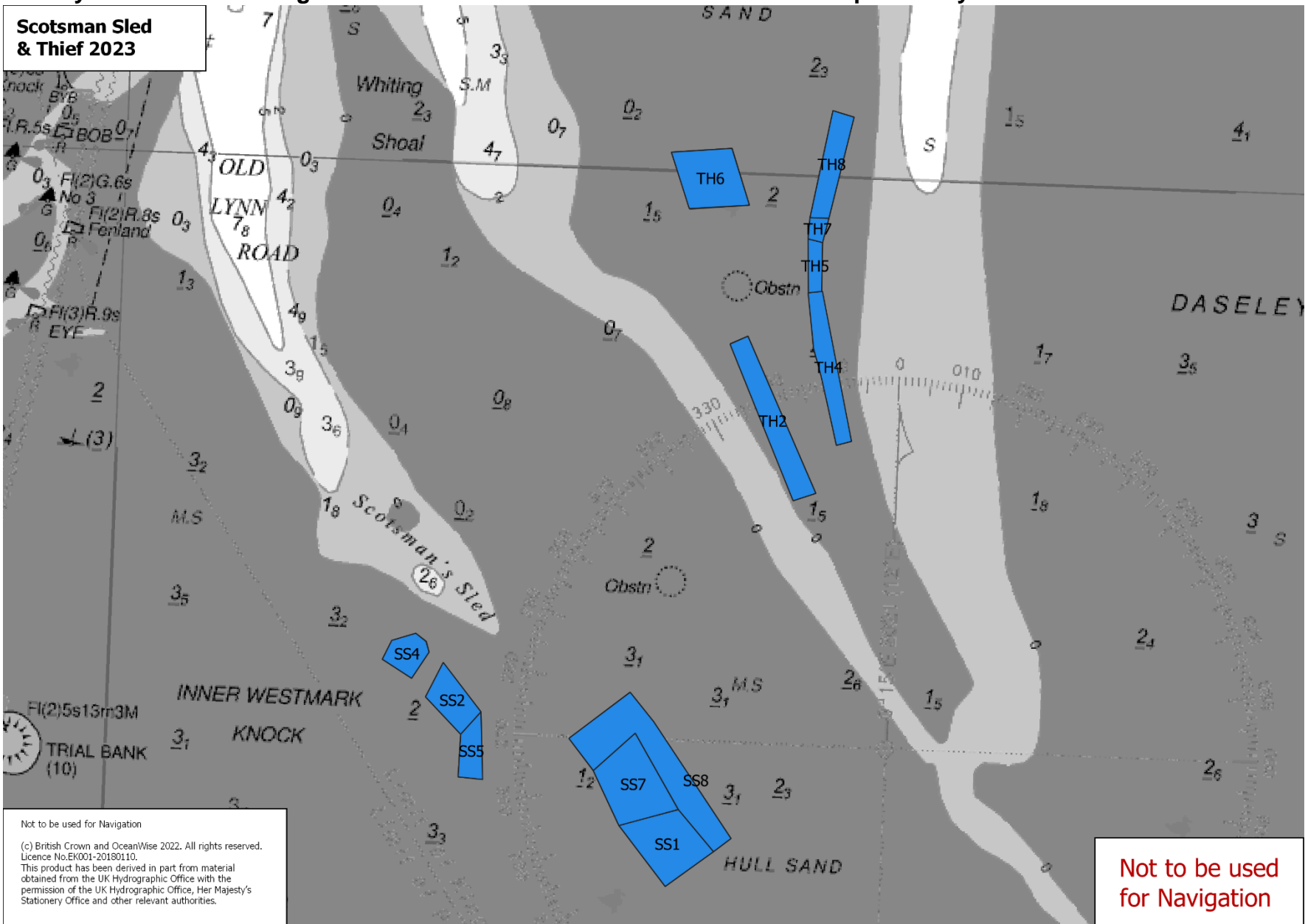


WFO Lays Chart 4 – showing the area of Toft and Roger sands and private lays



WFO Lays Chart 5 – showing the area of Scotsman Sled and Thief sands and private lays

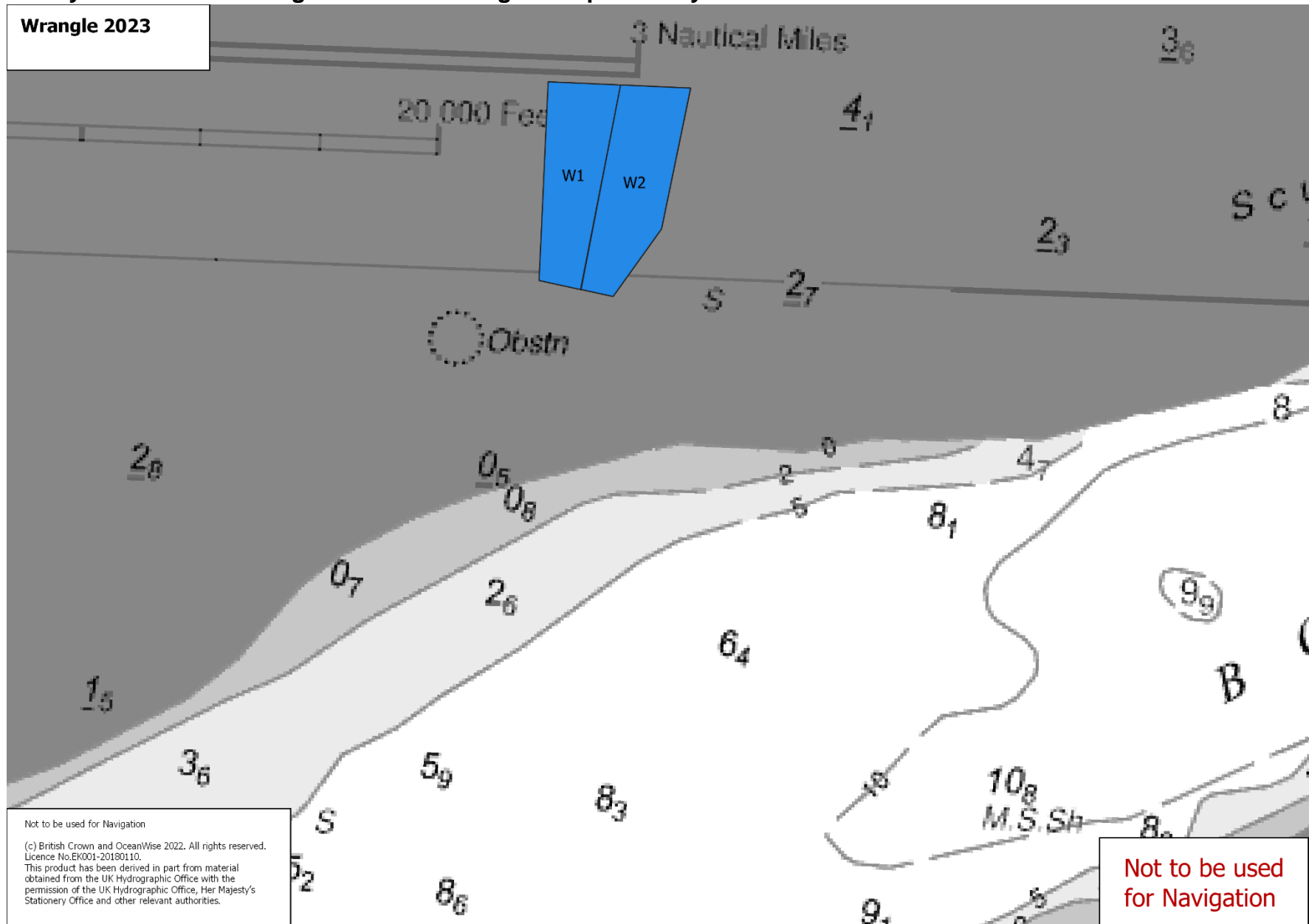
**Scotsman Sled
& Thief 2023**



Not to be used for Navigation
 (c) British Crown and OceanWise 2022. All rights reserved.
 Licence No.EK001-20180110.
 This product has been derived in part from material
 obtained from the UK Hydrographic Office with the
 permission of the UK Hydrographic Office, Her Majesty's
 Stationery Office and other relevant authorities.

**Not to be used
for Navigation**

WFO Lays Chart 6 – showing the area of Wrangle and private lays



Schedule 4 - Operating times

The following tables set out the Days of Operation for the cockle fishery as referred to in Exemption Condition 6 (Days of Operation).

	White rows are open periods
	Blue rows are closed periods

June

Date	Day	High Water	Height	High Water	Height	Open/close
1	S	0225hrs	6	1416hrs	6.39	
2	S	0331hrs	6.19	1525hrs	6.62	
3	M	0430hrs	6.43	1627hrs	6.88	
4	T	0523hrs	6.67	1724hrs	7.09	
5	W	0610hrs	6.88	1817hrs	7.23	
6	T	0654hrs	7.05	1909hrs	7.28	
7	F	0735hrs	7.17	1958hrs	7.22	
8	S	0815hrs	7.19	2046hrs	7.03	
9	S	0855hrs	7.09	2132hrs	6.75	
10	M	0934hrs	6.91	2216hrs	6.41	
11	T	1013hrs	6.67	2300hrs	6.05	
12	W	1054hrs	6.39	2345hrs	5.73	
13	T	1138hrs	6.11	****	****	
14	F	0037hrs	5.48	1230hrs	5.84	
15	S	0137hrs	5.33	1331hrs	5.65	
16	S	0239hrs	5.33	1438hrs	5.61	
17	M	0336hrs	5.49	1541hrs	5.73	
18	T	0430hrs	5.77	1638hrs	5.93	
19	W	0518hrs	6.09	1730hrs	6.18	
20	T	0602hrs	6.41	1818hrs	6.41	Open ay 0400hrs
21	F	0643hrs	6.68	1903hrs	6.61	Close at 2100hrs
22	S	0722hrs	6.9	1948hrs	6.79	
23	S	0801hrs	7.07	2032hrs	6.92	Open at 0600hrs
24	M	0842hrs	7.2	2117hrs	6.97	
25	T	0924hrs	7.26	2204hrs	6.92	
26	W	1007hrs	7.24	2253hrs	6.76	
27	T	1053hrs	7.15	2346hrs	6.53	
28	F	1142hrs	7	****	****	Close at 0145hrs
29	S	0045hrs	6.29	1237hrs	6.82	
30	S	0149hrs	6.12	1341hrs	6.64	

July

Date	Day	High Water	Height	High Water	Height	Open/close
1	M	0254hrs	6.05	1451hrs	6.51	Open at 0100hrs
2	T	0356hrs	6.1	1600hrs	6.48	
3	W	0457hrs	6.27	1709hrs	6.54	
4	TH	0551hrs	6.51	1812hrs	6.67	
5	F	0639hrs	6.76	1906hrs	6.79	Close at 2100hrs
6	S	0722hrs	6.96	1954hrs	6.85	
7	S	0802hrs	7.09	2039hrs	6.82	Open at 0600hrs
8	M	0840hrs	7.13	2118hrs	6.71	
9	T	0917hrs	7.09	2156hrs	6.54	
10	W	0952hrs	6.98	2231hrs	6.34	
11	TH	1027hrs	6.81	2306hrs	6.11	
12	F	1104hrs	6.57	2343hrs	5.87	Close at 0100hrs
13	S	1144hrs	6.26	****	****	
14	S	0027hrs	5.62	1230hrs	5.92	
15	M	0119hrs	5.41	1327hrs	5.62	
16	T	0224hrs	5.35	1439hrs	5.48	
17	W	0330hrs	5.48	1551hrs	5.57	
18	TH	0436hrs	5.79	1700hrs	5.85	
19	F	0533hrs	6.19	1800hrs	6.23	
20	S	0622hrs	6.6	1851hrs	6.62	
21	S	0706hrs	6.98	1939hrs	6.96	Open at 0500hrs
22	M	0748hrs	7.32	2024hrs	7.23	
23	T	0829hrs	7.61	2108hrs	7.38	
24	W	0910hrs	7.8	2153hrs	7.36	
25	TH	0952hrs	7.85	2237hrs	7.18	
26	F	1034hrs	7.75	2321hrs	6.87	
27	S	1119hrs	7.48	****	****	Close at 0130hrs
28	S	0009hrs	6.48	1209hrs	7.07	
29	M	0104hrs	6.1	1309hrs	6.57	
30	T	0211hrs	5.83	1424hrs	6.14	
31	W	0324hrs	5.76	1551hrs	5.97	

August

Date	Day	High Water	Height	High Water	Height	Open/close
1	T	0439hrs	5.94	1714hrs	6.1	
2	F	0541hrs	6.28	1817hrs	6.39	
3	S	0630hrs	6.65	1906hrs	6.63	
4	S	0710hrs	6.95	1948hrs	6.79	Open at 0500hrs
5	M	0747hrs	7.16	2024hrs	6.85	
6	T	0821hrs	7.3	2057hrs	6.84	
7	W	0855hrs	7.34	2127hrs	6.78	
8	T	0927hrs	7.3	2157hrs	6.67	
9	F	0958hrs	7.15	2227hrs	6.5	
10	S	1030hrs	6.89	2258hrs	6.26	Close at 0030hrs
11	S	1102hrs	6.53	2333hrs	5.96	
12	M	1139hrs	6.1	****	****	
13	T	0015hrs	5.63	1227hrs	5.65	
14	W	0113hrs	5.35	1339hrs	5.3	
15	T	0236hrs	5.28	1515hrs	5.29	
16	F	0400hrs	5.56	1641hrs	5.69	
17	S	0509hrs	6.08	1747hrs	6.27	
18	S	0602hrs	6.66	1839hrs	6.84	Open at 0400hrs
19	M	0647hrs	7.21	1924hrs	7.29	
20	T	0728hrs	7.69	2008hrs	7.6	
21	W	0809hrs	8.08	2050hrs	7.74	
22	T	0849hrs	8.31	2130hrs	7.69	
23	F	0930hrs	8.32	2210hrs	7.45	
24	S	1011hrs	8.09	2250hrs	7.06	Close at 0015hrs
25	S	1054hrs	7.62	2331hrs	6.58	Open at 0900hrs
26	M	1142hrs	6.97	****	****	
27	T	0020hrs	6.07	1243hrs	6.24	Close at 0230hrs
28	W	0127hrs	5.64	1413hrs	5.67	
29	T	0259hrs	5.49	1557hrs	5.62	
30	F	0427hrs	5.76	1718hrs	5.99	
31	S	0530hrs	6.25	1815hrs	6.42	

September

Date	Day	High Water	Height	High Water	Height	Open/close
1	S	0616hrs	6.7	1857hrs	6.72	Open at 0400hrs
2	M	0653hrs	7.04	1930hrs	6.89	
3	T	0726hrs	7.29	2000hrs	6.98	
4	W	0757hrs	7.45	2028hrs	7.03	
5	T	0828hrs	7.52	2056hrs	7.03	
6	F	0859hrs	7.47	2123hrs	6.96	Close at 2330hrs
7	S	0928hrs	7.29	2150hrs	6.81	
8	S	0956hrs	6.99	2218hrs	6.57	
9	M	1024hrs	6.6	2248hrs	6.25	
10	T	1056hrs	6.16	2324hrs	5.87	
11	W	1142hrs	5.66	****	****	
12	T	0018hrs	5.48	1257hrs	5.23	
13	F	0144hrs	5.24	1454hrs	5.22	
14	S	0327hrs	5.49	1625hrs	5.76	
15	S	0442hrs	6.12	1730hrs	6.47	Open at 0230hrs
16	M	0536hrs	6.83	1820hrs	7.09	
17	T	0621hrs	7.48	1904hrs	7.54	
18	W	0703hrs	8.02	1945hrs	7.82	
19	T	0743hrs	8.4	2024hrs	7.91	
20	F	0824hrs	8.56	2102hrs	7.83	Close at 2300hrs
21	S	0905hrs	8.46	2139hrs	7.56	
22	S	0948hrs	8.07	2217hrs	7.15	Open at 0745hrs
23	M	1032hrs	7.44	2257hrs	6.64	
24	T	1122hrs	6.65	2345hrs	6.08	
25	W	****	****	1230hrs	5.85	Close at 0145hrs
26	T	0051hrs	5.57	1413hrs	5.39	
27	F	0232hrs	5.38	1554hrs	5.53	
28	S	0406hrs	5.7	1705hrs	6.01	
29	S	0508hrs	6.23	1754hrs	6.46	
30	M	0551hrs	6.7	1831hrs	6.75	Open at 0345hrs

October

Date	Day	High Water	Height	High Water	Height	Open/close
1	T	0627hrs	7.05	1902hrs	6.93	
2	W	0659hrs	7.3	1929hrs	7.06	
3	T	0730hrs	7.45	1956hrs	7.15	
4	F	0800hrs	7.49	2023hrs	7.19	Close at 2230hrs
5	S	0830hrs	7.41	2050hrs	7.14	
6	S	0859hrs	7.21	2117hrs	7	Open at 0700hrs
7	M	0927hrs	6.92	2143hrs	6.77	
8	T	0956hrs	6.56	2212hrs	6.47	
9	W	1030hrs	6.14	2250hrs	6.09	
10	T	1121hrs	5.68	2345hrs	5.68	Close at 0045hrs
11	F	****	****	1242hrs	5.3	
12	S	0109hrs	5.43	1436hrs	5.38	
13	S	0251hrs	5.65	1602hrs	5.95	
14	M	0407hrs	6.27	1703hrs	6.62	Open at 0200hrs
15	T	0503hrs	6.98	1754hrs	7.18	
16	W	0551hrs	7.61	1836hrs	7.56	
17	T	0633hrs	8.1	1916hrs	7.79	
18	F	0716hrs	8.39	1954hrs	7.87	Close at 2200hrs
19	S	0800hrs	8.45	2033hrs	7.79	
20	S	0844hrs	8.23	2111hrs	7.56	Open at 0645hrs
21	M	0930hrs	7.75	2150hrs	7.18	
22	T	1018hrs	7.08	2231hrs	6.7	
23	W	1111hrs	6.34	2318hrs	6.17	
24	T	****	****	1221hrs	5.67	Close at 0115hrs
25	F	0020hrs	5.68	1357hrs	5.34	
26	S	0151hrs	5.44	1524hrs	5.48	
27	S	0225hrs	5.64	1530hrs	5.87	
28	M	0330hrs	6.07	1618hrs	6.25	Open at 0130hrs
29	T	0416hrs	6.49	1655hrs	6.55	
30	W	0454hrs	6.82	1727hrs	6.79	
31	T	0527hrs	7.06	1756hrs	6.98	

November

Date	Day	High Water	Height	High Water	Height	Open/close
1	F	0600hrs	7.21	1824hrs	7.12	Close at 2030hrs
2	S	0633hrs	7.24	1852hrs	7.19	
3	S	0704hrs	7.17	1921hrs	7.18	
4	M	0736hrs	7.02	1950hrs	7.08	Open at 0530hrs
5	T	0808hrs	6.8	2020hrs	6.9	
6	W	0843hrs	6.52	2054hrs	6.65	
7	T	0926hrs	6.18	2136hrs	6.33	Close at 2330hrs
8	F	1021hrs	5.83	2233hrs	6.02	
9	S	1136hrs	5.59	2345hrs	5.85	
10	S	****	****	1310hrs	5.66	
11	M	0109hrs	6	1428hrs	6.06	
12	T	0224hrs	6.45	1530hrs	6.54	Open at 0030hrs
13	W	0324hrs	6.99	1621hrs	6.97	
14	T	0417hrs	7.48	1706hrs	7.29	
15	F	0506hrs	7.83	1748hrs	7.51	Close at 1945hrs
16	S	0554hrs	8.01	1829hrs	7.62	
17	S	0642hrs	7.98	1909hrs	7.61	
18	M	0730hrs	7.75	1950hrs	7.46	Open at 0530hrs
19	T	0819hrs	7.34	2030hrs	7.18	
20	W	0909hrs	6.8	2112hrs	6.8	
21	T	1000hrs	6.24	2157hrs	6.39	Close at 2359hrs
22	F	1059hrs	5.74	2249hrs	5.98	
23	S	1213hrs	5.42	2355hrs	5.69	
24	S	****	****	1328hrs	5.37	
25	M	0117hrs	5.62	1433hrs	5.54	
26	T	0230hrs	5.79	1527hrs	5.82	
27	W	0327hrs	6.07	1610hrs	6.13	Open at 0130hrs
28	T	0412hrs	6.35	1648hrs	6.43	
29	F	0454hrs	6.6	1721hrs	6.7	Close at 1930hrs
30	S	0532hrs	6.76	1754hrs	6.91	

December

Date	Day	High Water	Height	High Water	Height	
1	S	0609hrs	6.86	1827hrs	7.05	Open at 0445hrs
2	M	0645hrs	6.88	1859hrs	7.12	
3	T	0721hrs	6.86	1933hrs	7.12	
4	W	0800hrs	6.78	2009hrs	7.06	
5	T	0950hrs	6.65	2048hrs	6.93	
6	F	0927hrs	6.44	2132hrs	6.75	Close at 2330hrs
7	S	1019hrs	6.2	2222hrs	6.58	
8	S	1119hrs	5.99	2320hrs	6.44	
9	M	****	****	1233hrs	5.91	
10	T	0027hrs	6.42	1346hrs	6.01	
11	W	0139hrs	6.55	1450hrs	6.24	Open at 0001hrs
12	T	0246hrs	6.78	1116hrs	6.53	
13	F	0348hrs	7.03	1639hrs	6.82	Close at 1845hrs
14	S	0447hrs	7.24	1727hrs	7.07	
15	S	0543hrs	7.37	1812hrs	7.27	Open at 0330hrs
16	M	0636hrs	7.39	1854hrs	7.37	
17	T	0725hrs	7.28	1936hrs	7.36	
18	W	0812hrs	7.05	2015hrs	7.23	
19	T	0857hrs	6.72	2055hrs	7.01	
20	F	0940hrs	6.35	2135hrs	6.74	Close at 2330hrs
21	S	1024hrs	5.98	2217hrs	6.42	
22	S	1111hrs	5.65	0057hrs	6.09	
23	M	****	****	1206hrs	5.4	
24	T	0000hrs	5.79	1309hrs	5.29	
25	W	0108hrs	5.6	1412hrs	5.36	
26	T	0218hrs	5.6	1512hrs	5.59	
27	F	0323hrs	5.76	1604hrs	5.93	
28	S	0420hrs	6.01	1649hrs	6.28	
29	S	0509hrs	6.28	1730hrs	6.6	
30	M	0552hrs	6.51	1808hrs	6.87	
31	T	0633hrs	6.71	1845hrs	7.08	