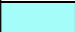



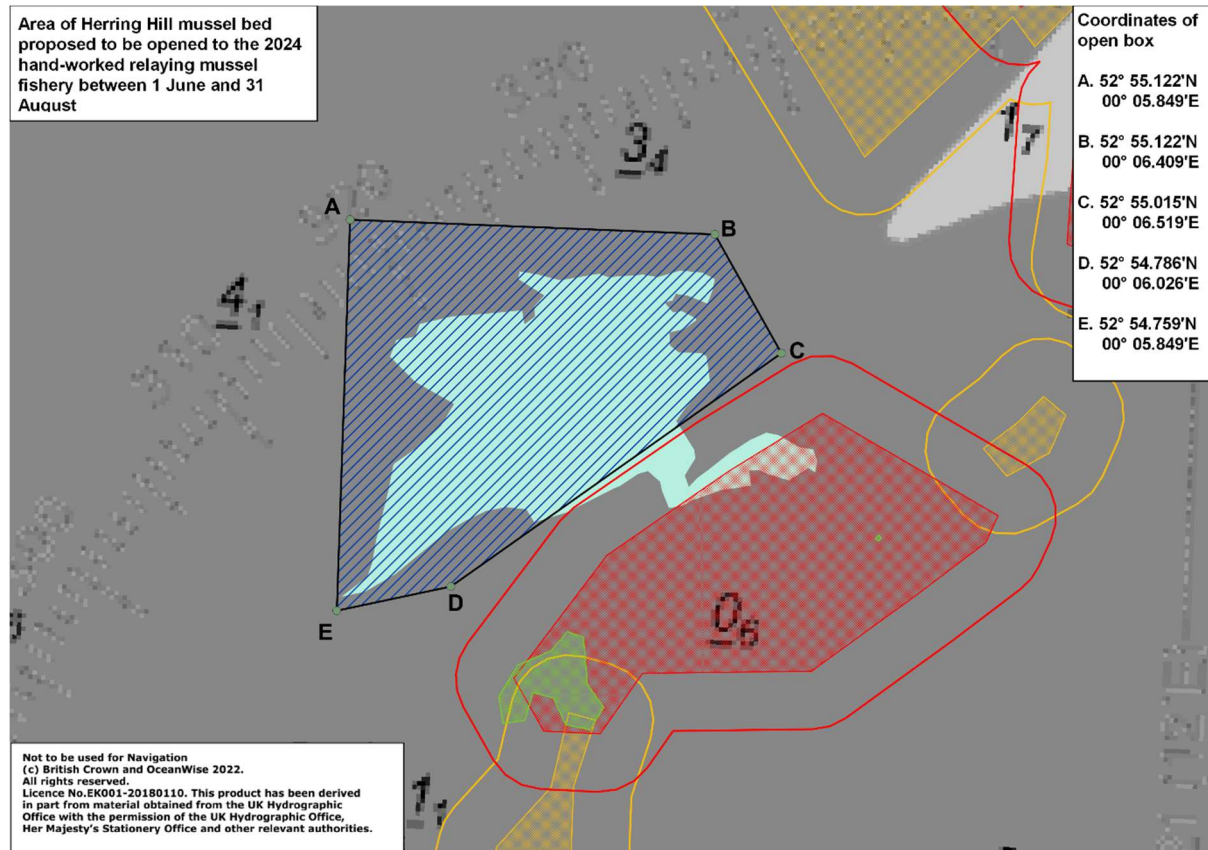
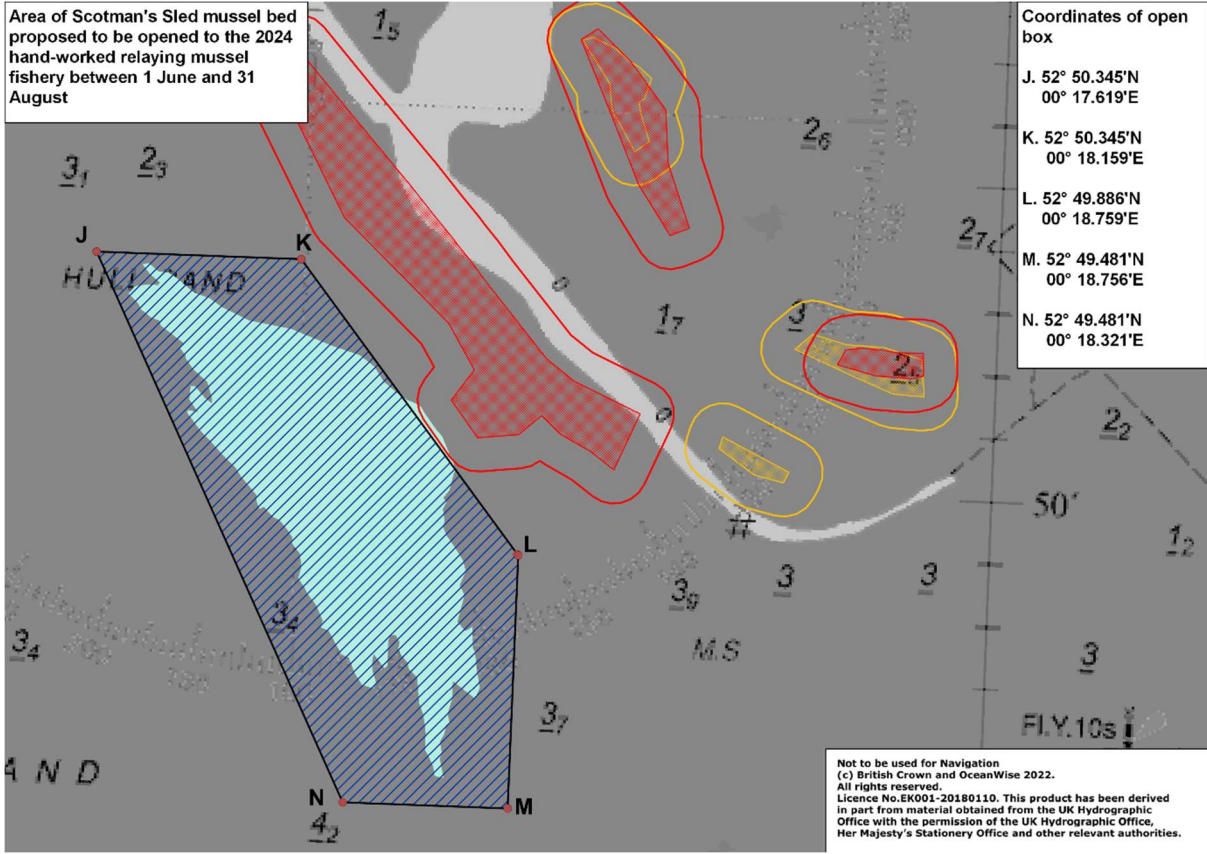


## Revised Open areas for the Hand-work fishery for Herring Hill, Scotman's Sled, Blackshore and Back of The Wall mussel beds from 1 June to 31 August

Chart legend	
Colour	Meaning
	Mussel bed
	High use seal haul-out site
	Medium use seal haul-out site
	Low use sea haul-out site



Area of Scotman's Sled mussel bed proposed to be opened to the 2024 hand-worked relaying mussel fishery between 1 June and 31 August

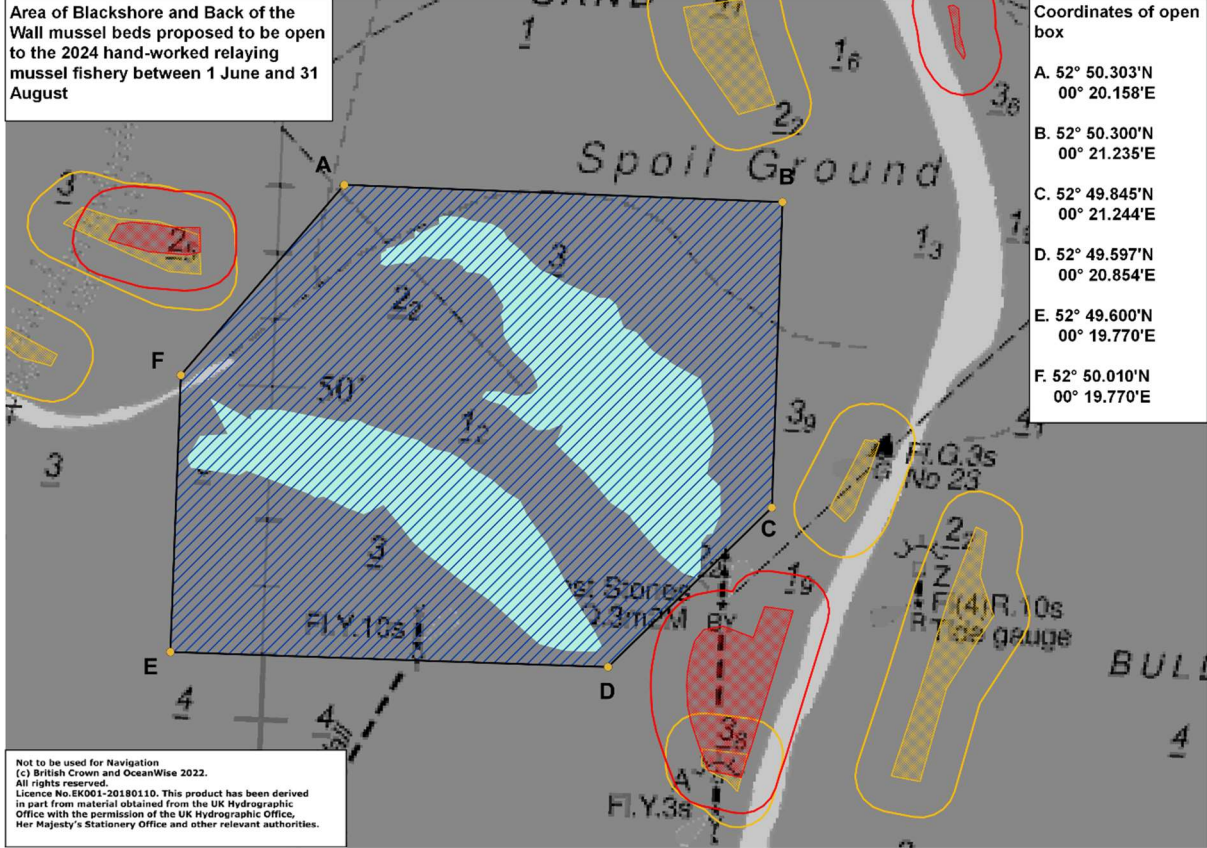


Coordinates of open box

J	52° 50.345'N	00° 17.619'E
K	52° 50.345'N	00° 18.159'E
L	52° 49.886'N	00° 18.759'E
M	52° 49.481'N	00° 18.756'E
N	52° 49.481'N	00° 18.321'E

Not to be used for Navigation  
 (c) British Crown and OceanWise 2022.  
 All rights reserved.  
 Licence No.EK001-20180110. This product has been derived in part from material obtained from the UK Hydrographic Office with the permission of the UK Hydrographic Office, Her Majesty's Stationary Office and other relevant authorities.

Area of Blackshore and Back of the Wall mussel beds proposed to be open to the 2024 hand-worked relaying mussel fishery between 1 June and 31 August



Coordinates of open box

A	52° 50.303'N	00° 20.158'E
B	52° 50.300'N	00° 21.235'E
C	52° 49.845'N	00° 21.244'E
D	52° 49.597'N	00° 20.854'E
E	52° 49.600'N	00° 19.770'E
F	52° 50.010'N	00° 19.770'E

Not to be used for Navigation  
 (c) British Crown and OceanWise 2022.  
 All rights reserved.  
 Licence No.EK001-20180110. This product has been derived in part from material obtained from the UK Hydrographic Office with the permission of the UK Hydrographic Office, Her Majesty's Stationary Office and other relevant authorities.