

NOTICE TO MARINERS

Issue Date: 10th June 2022

VIKING LINK Project

HVDC Pre-lay and Post-lay Mattressing Work

Mariners are advised about pre-lay and post-lay mattress installation planned for the Viking Link project which is an HVDC electricity transmission interconnector between Denmark and England, a joint venture between National Grid and Energinet.

Pre-lay mattressing installations are planned to take place from mid-June 2022 to July 31st, 2022.

Post-lay mattresses installation is planned to take place from July 8th to August 15th, 2022.

The route length of the main HVDC interconnection (2x bundles power cables + 1x Fibre Optic Cable) is in the order of 620km. The works covered within this Notice to Mariners are divided in the following activities:

- Cable Pre-Lay and Post-Lay mattressing protection at Ketch to Murdoch crossing (UK waters)
- Cable Pre-lay mattressing protection at:
 - D18a to D15a (NL waters)
 - D15-FA to L10-AC (NL waters)

The mattressing works are being carried out by:

Asso Subsea using TSV Aethra (IMO 9181481; Call Sign 5BHH4).

Vessel and contact details are given in **Table 1** below.

Vessels are requested to pass at a safe speed and distance and fishing vessels are advised to remain a safe distance, approximately 550m (0.3 nautical miles) from the areas identified. During these works the vessel will have restricted manoeuvrability as it completes its work scope.

VHF CH 16 will be monitored at all times and will be used to contact the coastguard in the event of an emergency.

Vessel Name	Vessel Photograph	Vessel Details
Trenching Support Vessel – “Aethra”	 <p data-bbox="496 696 624 723">© Claus Schaefer MarineTraffic.com</p> <p data-bbox="975 696 1203 723">Schiffsfotos@t-online.de</p>	MMSI: 212466000 Call Sign: 5BHH4

Table 1: Work vessel details

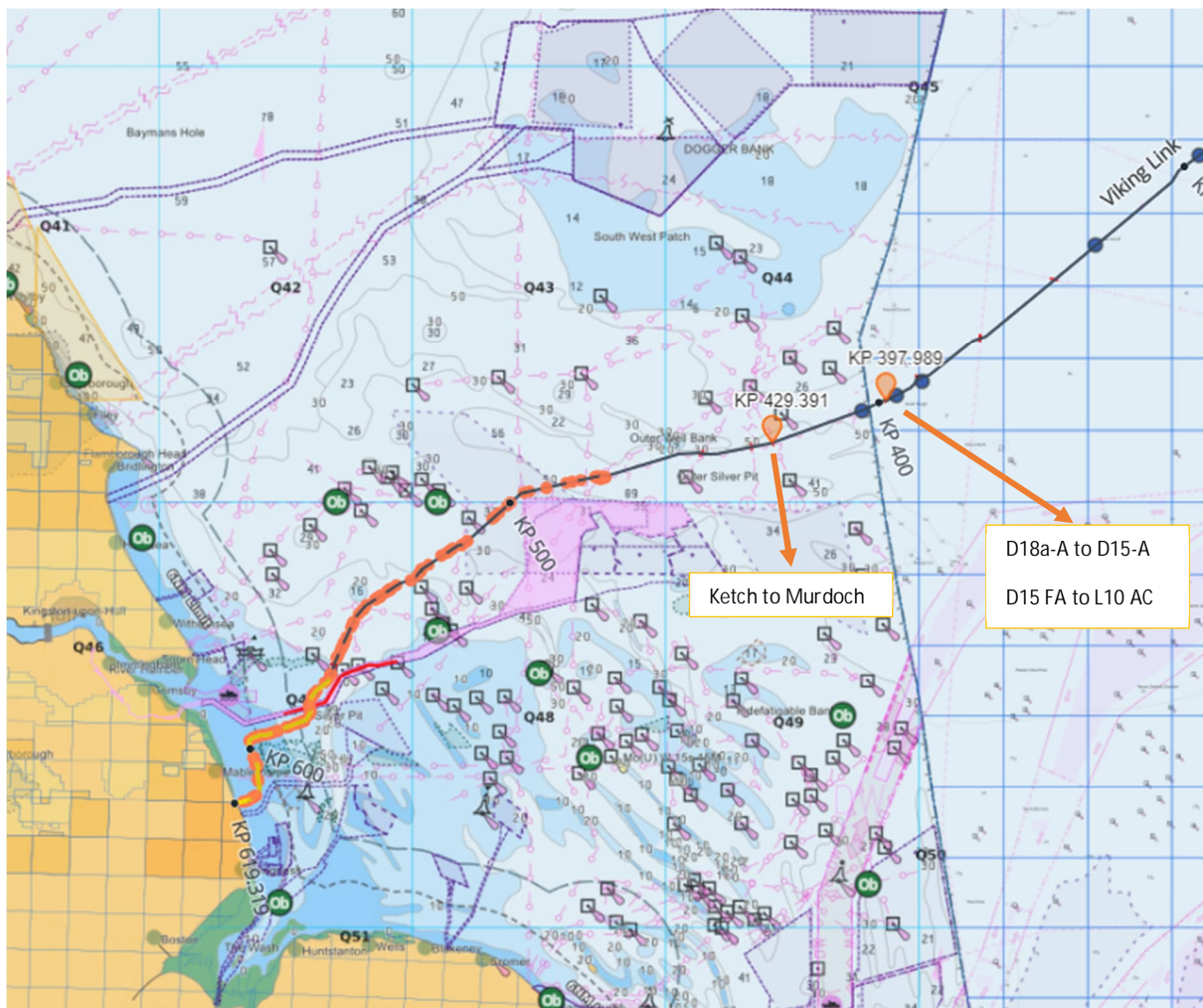


Figure 1: Overview of the Viking Link Interconnector area of work

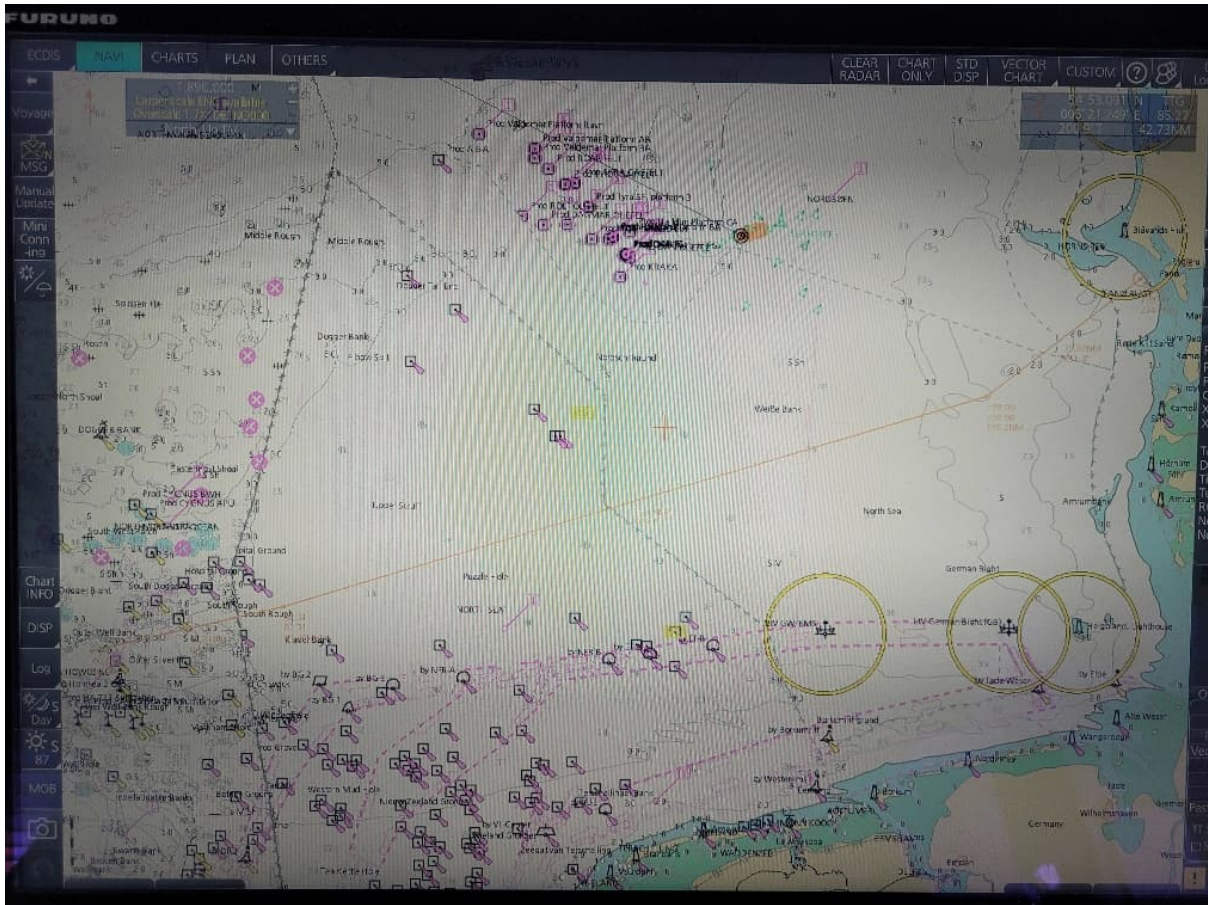


Figure 2: TSV “Aethra” Transit Route and Passage Plan

Works overview

At service crossings the method of protection agreed has been the use of concrete mattresses/concrete bridge structure, to be placed before the Viking HVDC cable C5 lay at the crossings location reported below in the Table 2.

DESCRIPTION	ETRS 1989 UTM 31N		ETRS89		WD LAT [m]
	Easting [m]	Northing [m]	Latitude	Longitude	
Ketch to Murdoch 18-inch Gas 3-inch Methanol PL	462236,46	5998896,40	54° 08.208'N	002° 25.320'E	59,2
D18a to D15a 8-inch Gas 2-inch Methanol Pipeline	491583,01	6009697,89	54° 14.112'N	002° 52.252'E	54,1
D15-FA to L10-AC 36-inch Gas Pipeline	500135,84	6015228,38	54° 17.098'N	003° 00.125'E	51,7

Table 2: Locations for the Service Crossing

Contact Details:

Further enquiries should be addressed to the following contacts:

FLO contact

Jonathan Keer

jonathan@brownmay.com

Mobile: +44 7850 604851

Freya Sandison

freya@brownmay.com

Mobile: +44 7857 500609

Prysmian Project Manager

Alessandro Jared Crivelli

alessandro.crivelli@prysmiangroup.com

Mobile: +39 345 45 95 615

Prysmian Project Manager

Matteo Borselli

matteo.borselli@prysmiangroup.com

Mobile: +39 338 65 41 587

ASSO Offshore Team Manager

Lampros Merkouris

lmerkouris@assogroup.com

Mobile: +30 211 888 5102

Vessel Master of Aethra

aethra@assogroup.com

Mobile: +30 694 8274 414